



SNJB's SHRIMAN SURESHDADA JAIN COLLEGE OF PHARMACY  
JAIN GURUKUL, NEMINAGAR, AT/P. CHANDWAD,  
Tal. Chandwad, Dist. Nashik-423 101.

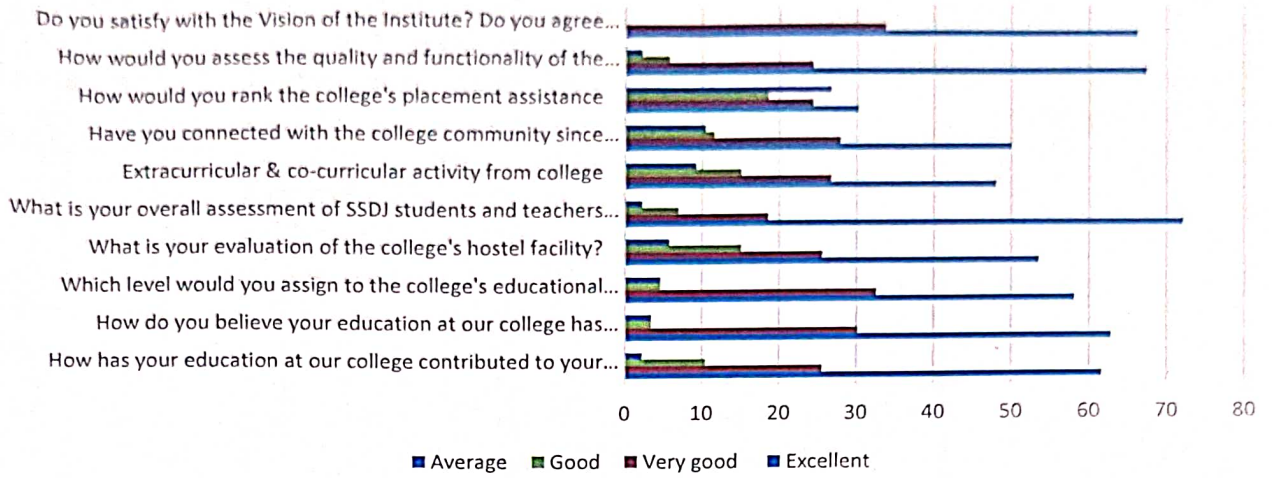
**AlumniFeedback Form(2022-23)**  
**(B.Pharmacy Program)**

S. No.	Questions	Responses (%)			
		Excellent	Very good	Good	Average
1	How has your education at our college contributed to your career success?	61.6	25.6	10.5	2.3
2	How do you believe your education at our college has impacted your life and career?	62.8	30.2	3.5	3.5
3	Which level would you assign to the college's educational resources?	58.1	32.6	4.7	4.7
4	What is your evaluation of the college's hostel facility?	53.5	25.6	15.1	5.8
5	What is your overall assessment of SSDJ students and teacher's interactions?	72.1	18.6	7	2.3
6	Extracurricular & co-curricular activity from college	48.	26.7	15.1	9.3
7	Have you connected with the college community since graduation	50	27.9	11.6	10.5
8	How would you rank the college's placement assistance	30.2	24.4	18.6	26.7
9	How would you assess the quality and functionality of the infrastructure, laboratories, and library facilities at our college	67.4	24.4	5.8	2.3
10	Do you satisfy with the Vision of the Institute? Do you agree with the Mission of the Institute? Please provide your input.	66.2	33.7		



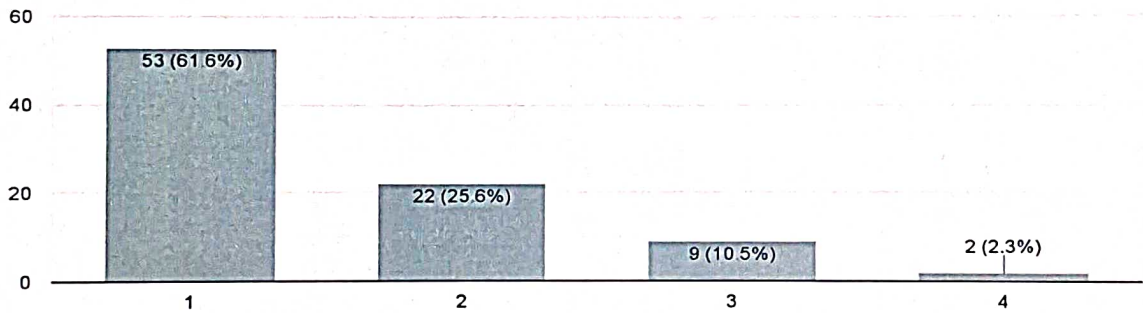
**PRINCIPAL**  
SNJB's SHRIMAN SURESHDADA JAIN  
COLLEGE OF PHARMACY, NEMINAGAR  
CHANDWAD (NASHIK)

## Alumni Feedback (2022-23)



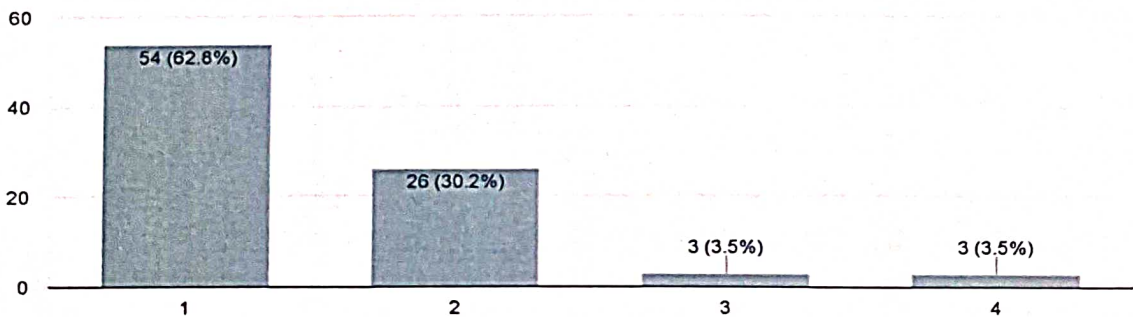
### How has your education at our college contributed to your career success?


86 responses



### How do you believe your education at our college has impacted your life and career?

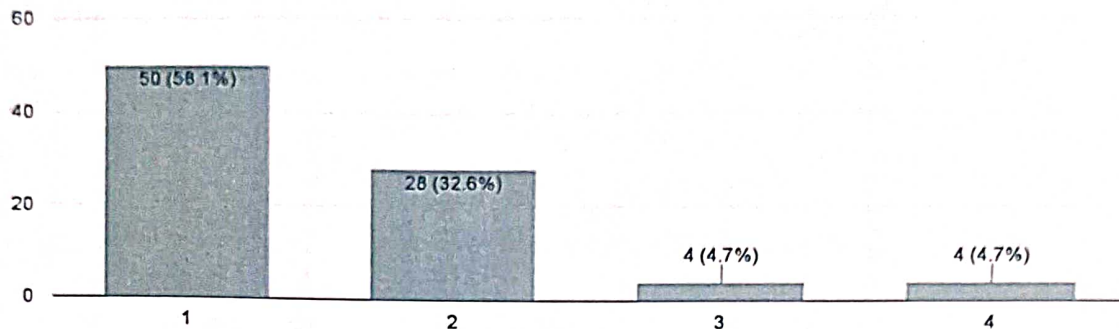
86 responses



  
**PRINCIPAL**  
 SNJB's SHRIMAN SURESHDADA JAIN  
 COLLEGE OF PHARMACY, NEMINAGAR  
 CHANDWAD (NASHIK)

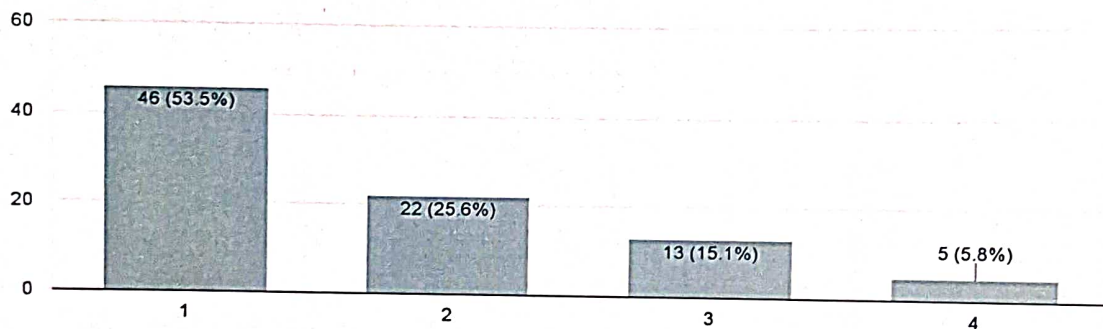
Which level would you assign to the college's educational resources?

86 responses



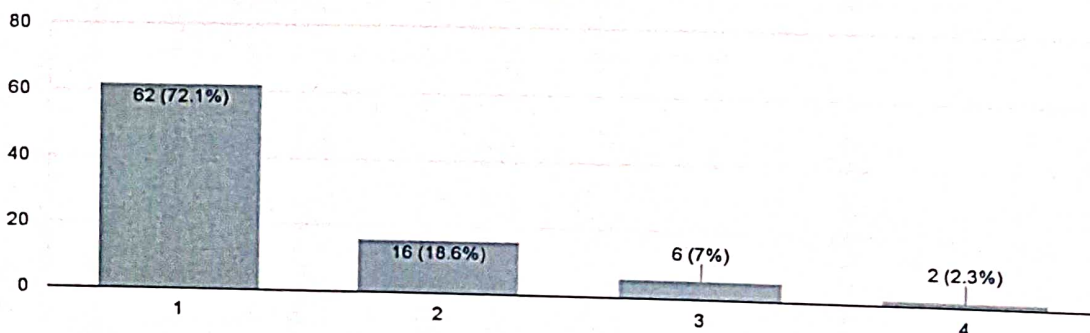
What is your evaluation of the college's hostel facility?

86 responses



What is your overall assessment of SSDJ students and teachers interactions?

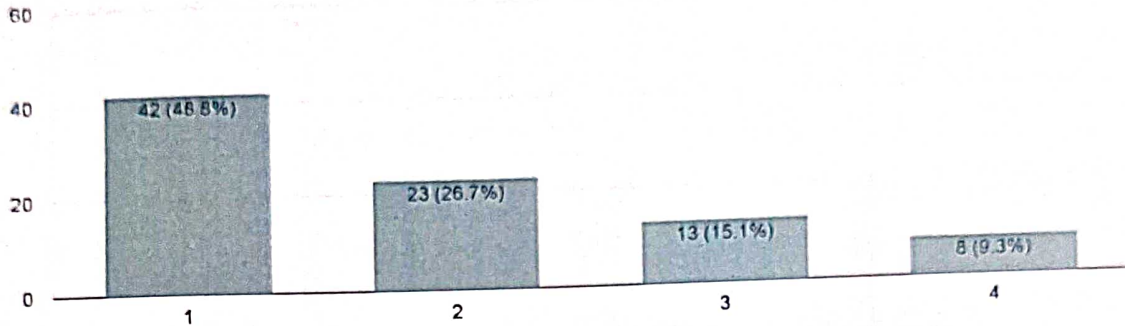
86 responses



**PRINCIPAL**  
SNJB's SHRIMAN SURESHDADA JAIN  
COLLEGE OF PHARMACY, NEMINAGAR  
CHANDWAD (NASHIK)

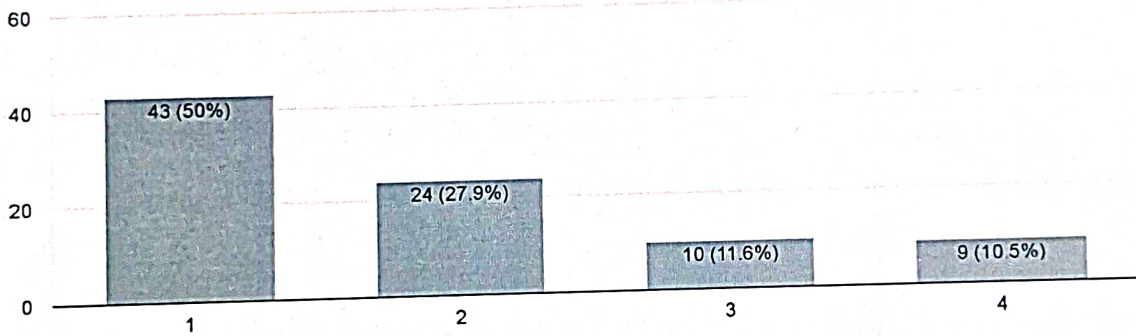
### Extracurricular & co-curricular activity from college

86 responses



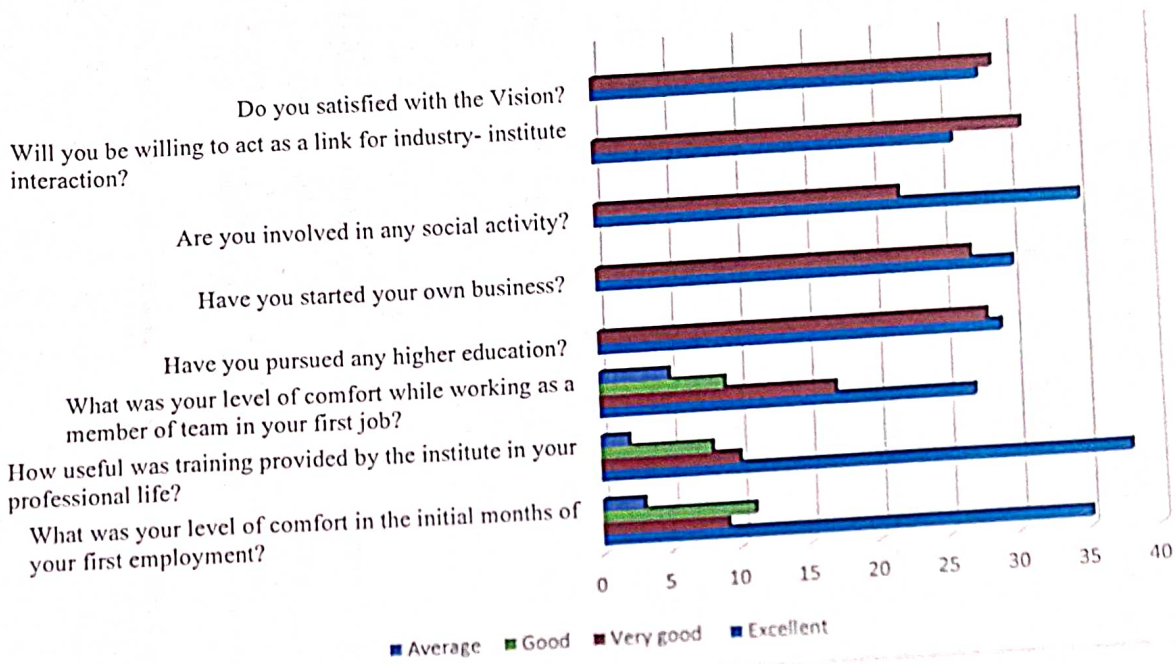
### Have you connected with the college community since graduation


86 responses



**PRINCIPAL**  
SNJB's SHRIMAN SURESHDADA JAIN  
COLLEGE OF PHARMACY, NEMINAGAR  
CHANDWAD (NASHIK)

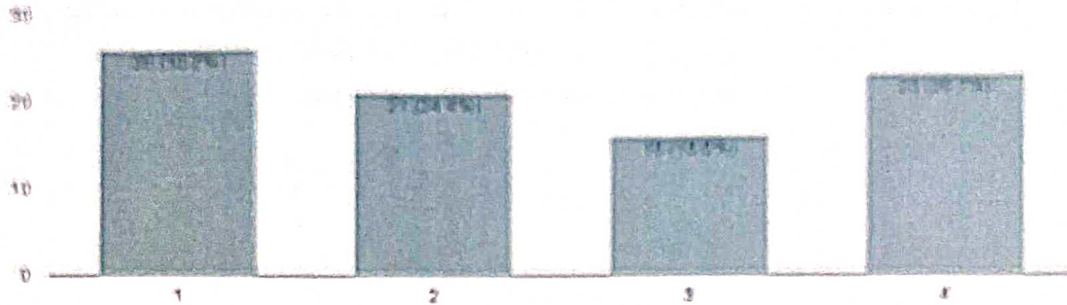
## Alumini Feedback 2019-20



  
**PRINCIPAL**  
 SNJB's SHRIMAN SURESHDADA JAIN  
 COLLEGE OF PHARMACY, NEMINAGAR  
 CHANDWAD (NASHIK)

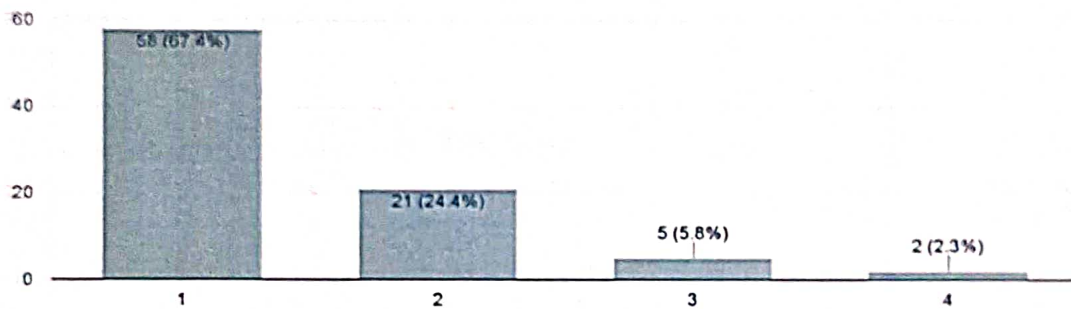
How would you rate the college's placement assistance

86 responses



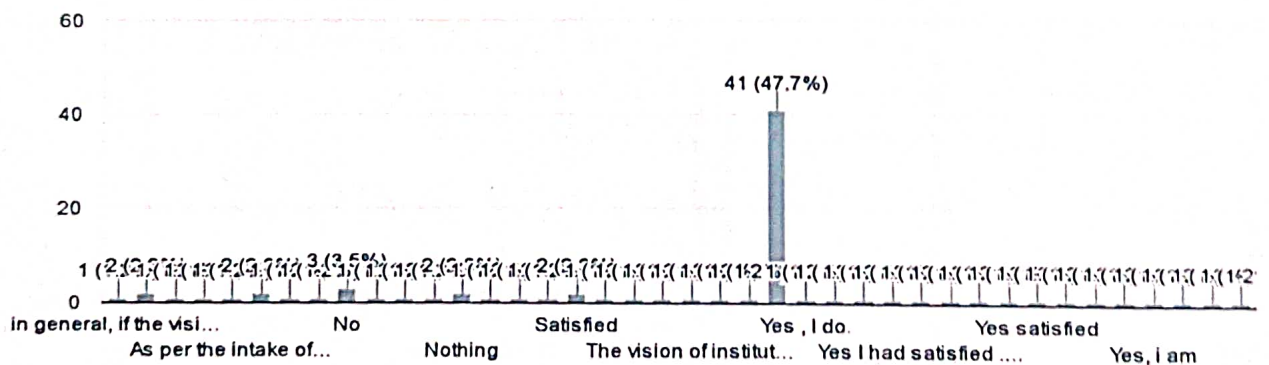
How would you assess the quality and functionality of the Infrastructure, laboratories, and library facilities at our college

86 responses



Do you satisfied with the Vision of the Institute? Do you agree with the Mission of the Institute? Please provide your input.

86 responses



5  
**PRINCIPAL**  
 SNJB'S SHRIMAN SURESHDADA JAIN  
 COLLEGE OF PHARMACY, NEMINAGAR  
 CHANDWAD (NASHIK)

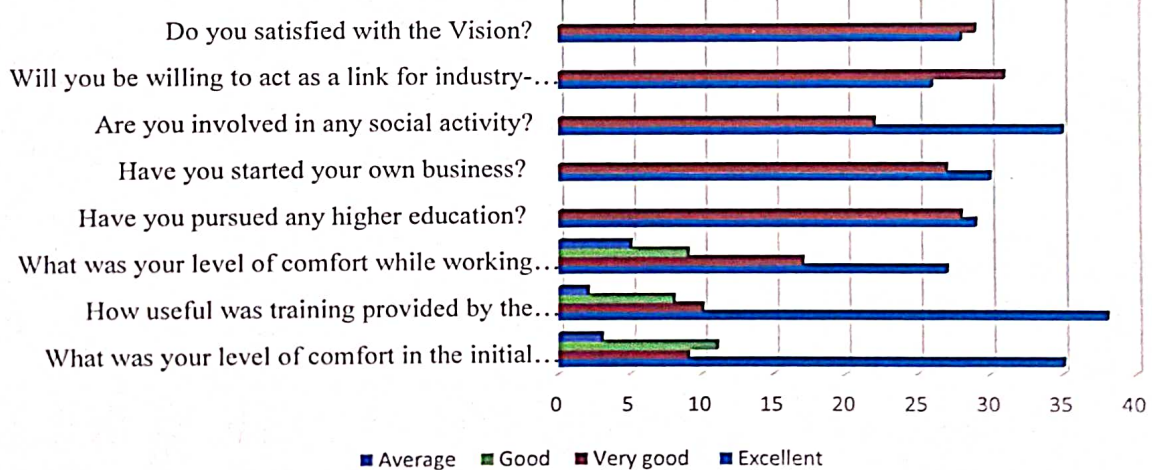


SNJB's SHRIMAN SURESHDADA JAIN COLLEGE OF PHARMACY  
JAIN GURUKUL, NEMINAGAR, AT/P. CHANDWAD,  
Tal. Chandwad, Dist. Nashik-423 101.

## Alumni Feedback Form (B.Pharmacy Program)

S. No.	Subjects (Theory)	Excellent	Very good	Good	Average
1	What was your level of comfort in the initial months of your first employment?	35	09	11	03
2	How useful was training provided by the institute in your professional life?	38	10	08	02
3	What was your level of comfort while working as a member of team in your first job?	27	17	09	05
4	Have you pursued any higher education?	29	28		
5	Have you started your own business?	30	27		
6	Are you involved in any social activity?	35	22		
7	Will you be willing to act as a link for industry-institute interaction?	26	31		
8	Do you satisfied with the Vision? Do you agree with the Mission of the Institute?	28	29		

### Alumini Feedback 2019-20



PRINCIPAL  
SNJB's SHRIMAN SURESHDADA JAIN  
COLLEGE OF PHARMACY NEMINAGAR  
CHANDWAD (NASHIK)