

IPECACUANHA

DR. SANDEEP PAREEK

Associate Professor, Dept. of HMM

Smt. K. B. Abad HMC, Chandwad



FAMILY :
RUBIACEAE

COMMON NAME :
IPECAC

PROVER :
DR. HAHNEMANN

INTRODUCTION



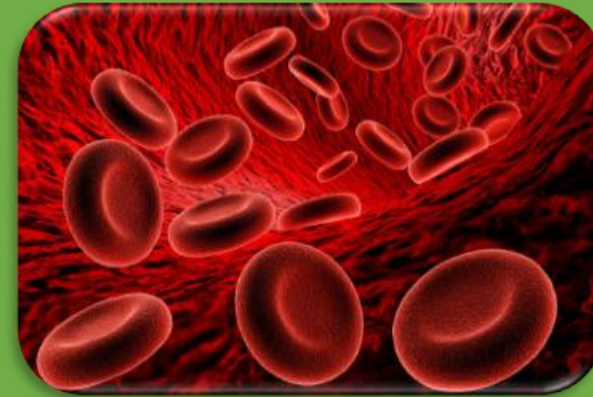
IPECACUANHA IS AN INTERESTING DRUG STANDING ON THE CEASEFIRE LINE BETWEEN THE ABSOLUTE OPPOSITE WAYS OF THERAPEUTICS. ACCORDING TO HAHNEMANN, IPECAC IS A SHORT ACTING MEDICINE.

IPECAC HAS A WIDE SPHERE OF ACTION AMONG ACUTE SICKNESS. MOST OF ITS ACUTE COMPLAINTS COMMENCE WITH NAUSEA , VOMITING.

IT IS A WELL KNOWN EMETIC ALSO USED IN ALLOPATHIC SYSTEM OF MEDICINE.

- **CLINICAL**

ANAEMIA



ASTHMA



CHOREA



CONVULSIONS



COUGH



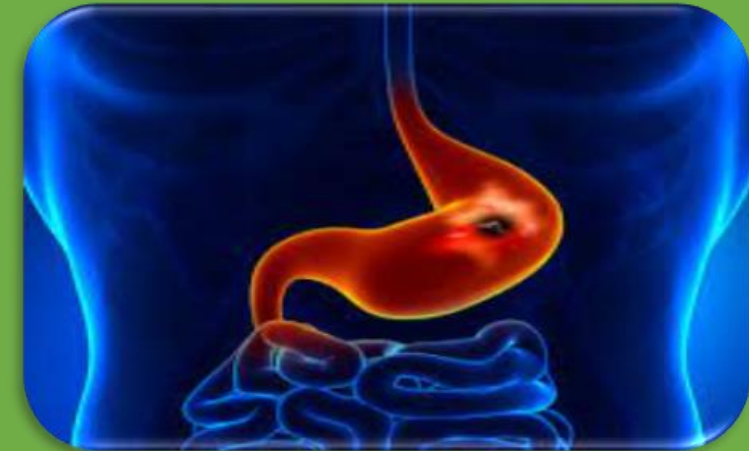
DYSENTERY



GALL STONE COLIC



GASTRIC ULCER



HAEMATEMESIS



HAEMORRHAGE



**WHOOPIING
COUGH**



BRONCHITIS



FEVERS :
INTERMITTENT
REMITTENT
ENTERIC



NAUSEA



VOMITING



SPHERE OF ACTION

THE CHIEF ACTION OF THIS DRUG IS ON :



**THE
RAMIFICATION
OF THE
PNEUMOGAST-
RIC NERVE**



**THE
MEDULLA
OBLONGATA**



**THE MUCOUS
MEMBRANE OF
RESPIRATORY
TRACT**



**THE MUCOUS
MEMBRANE OF
GASTRO-
INTESTINAL
TRACT**



**THE
ARTERIAL
VASCULAR
SYSTEM**

PATHOGENESIS

PNEUMOGASTRIC NERVE



**IRRITATION OF
STOMACH**

**IRRITATION OF
CHEST**

IRRITATION OF STOMACH



NAUSEA



VOMITING

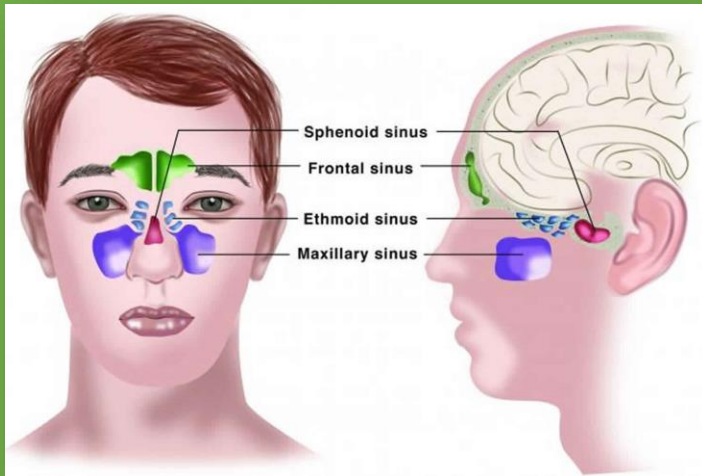
IRRITATION OF CHEST



ASTHMA

ON MUCOUS MEMBRANE

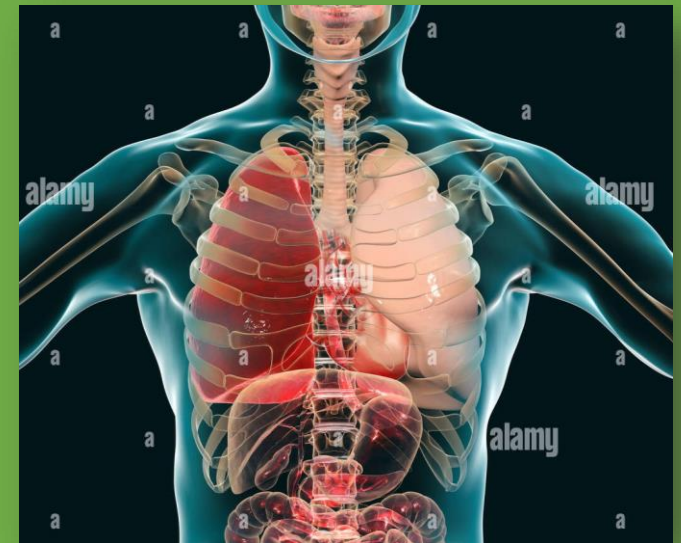
CATARRHAL CONDITION



PULMONARY CONGESTION



HEPATISATION



CONSTITUTION

PHYSICAL MAKEUP :



ESP. SUITED TO
STOUT PEOPLE
OF LAX FIBRE



FAIR PEOPLE ;
WOMEN AND
CHILDREN



PEOPLE WITH
HISTORY OF
EPISTAXIS

**THERMAL :
CHILLY
PATIENT**



**TEMPERAMENT :
IRRITABLE**



**MIASM : PSORA IS
IN THE
BACKGROUND.**

**DIATHESIS :
HAEMORRHAGIC**

CAUSATION

- **UNDIGESTIBLE FOOD**
- **RAISINS**
- **CAKES**
- **ANGER**
- **VEXATION**
- **RESERVED DISPLEASURE**
- **INJURIES**
- **SUPPRESSED ERUPTIONS**
- **QUININE**
- **MORPHIA**

GUIDING SYMPTOMS



MOST OF THE ACUTE SYMPTOMS COMMENCE WITH NAUSEA & VOMITING.



NAUSEA CONSTANT, PERSISTANT OR CONTINOUS , IS NOT RELIEVED BY VOMITING.



THIRSTLESSNESS. CLEAN TONGUE WITH MUCH SALIVA BUT NO THIRST.



**BRIGHT RED HAEMORRHAGE FROM
NATURAL ORIFICES OF THE BODY.**



COLD SWEAT ON THE FOREHEAD.



**OPPRESSED BREATHING ESP WITH
RESPIRATORY AND/OR GASTRIC
COMPLAINTS.**



ANXIETY ABOUT STOMACH IS PROMINENT.



WHEEZING AND RATTLING OF CHEST WITHOUT EXPECTORATION.



PATIENT IS VERY OVERSENSITIVE. CANNOT ENDURE LEAST NOISE.

MENTAL GENERALS

**PERSON IS
IRRITABLE
& SHORT
TEMPERED.**

**DESIRES
FOR MANY
THINGS,
WITHOUT
KNOWING
EXACTLY
WHAT IT IS.**

**PATIENT IS
OVERSENSITIVE
& CANNOT
ENDURE
LEAST NOISE.**

**CHILDREN
CRY, HOWL
& SCREAM
CONTINUOUSLY
WITHOUT
ANY CAUSE.**

**DISDAINFUL
HUMOUR.
IRRITABILITY
&
DISPOSITION
TO BE
ANGRY.**

**CONTEMPT
FOR
EVERYTHING.
IMPATIENCE.
SLOWNESS OF
CONCEPTION.**

PHYSICAL GENERALS

- THE SPECIAL FORM OF NAUSEA IS A CONSTANT DESIRE TO VOMIT; AFTER VOMITING THERE IS, INSTEAD OF RELIEF, A DESIRE TO VOMIT AGAIN.
- THE TONGUE IS CLEAN.
- THERE IS DISGUST AT THE STOMACH FOR FOOD.
- BLUE RINGS AROUND EYES
- MANY BONE PAINS IN HEAD AND ELSEWHERE. PAINS AS IF BONES WERE ALL TORN TO PIECES.
- COLDNESS OF HANDS AND FEET WHICH ARE NOT PERCEPTIBLE TO THE PATIENT HIMSELF.
- IPECAC WAS ALSO USED AS AN ANTIDOTE TO THE OPIUM AND MORPHIA HABIT.



SLEEP & DREAMS :

SLEEPLESSNESS. SLEEP, WITH HALF EYES OPEN. AGITATED SLEEP WITH GROANS. FRIGHTFUL DREAMS WITH FREQUENT STARTS AND TERRORS.



APPETITE :

INSIPID AND CLAMMY, OR BITTER TASTE ESP IN THE MORNING, GASTRIC CATARRH FROM INDIGESTIBLE FOOD OR FROM ICE COLD THINGS, BAD EFFECTS FROM EATING PORK , VEAL ,ETC.



DESIRE :

ONLY FOR DELICASIES AND THINGS SWEETENED WITH SUGAR, FOR DAINTITIES.



AVERSION :

TO ALL FOOD, BEER, TOBACCO SMOKE.

PARTICULARS

A diagram showing a black silhouette of a human figure on the left side of a green background. To the right of the silhouette, there are four horizontal lines with brackets on the left side, pointing to the silhouette. These lines are grouped into four distinct sections. The top section is labeled 'HEAD & FACE'. The second section is labeled 'RESPIRATORY SYSTEM'. The third section is labeled 'GASTROINTESTINAL TRACT'. The bottom section is labeled 'BONES & LIMBS'.

HEAD & FACE

RESPIRATORY SYSTEM

**GASTROINTESTINAL
TRACT**

BONES & LIMBS

HEAD & FACE :

HEAD - VERTIGO WHEN WALKING & WHEN TURNING AROUND, BONES OF SKULL FEEL CRUSHED OR BRUISED, PAIN EXTENDS TO TEETH & ROOT OF TONGUE, HEADACHE AS IF BRAIN IS COMPRESSED, WHICH PIERCES THROUGH ALL THE CRANIAL BONES INTO THE ROOT OF THE TEETH, ATTACKS OF HEADACHE WITH NAUSEA & VOMITING, TEARING IN THE FOREHEAD AGGRAVATED BY TOUCH, PAIN IN THE OCCIPUT & THE NAPE OF NECK.

EYES – EYES RED & INFLAMMED, PAIN THROUGH EYEBALLS, PROFUSE LACHRYMATION, HE WAS AWAKENED BETWEEN 2 & 3 AM BY TEARING PAIN IN THE EYES, PUPILS DILATED, CONFUSED SIGHT, SCROFULOUS OPHTHALMIA, PHOTOPHOBIA, CORNEAL ULCERATION, STATE OF VISION CONSTANTLY CHANGING,
“ NAUSEA FROM LOOKING ON MOVING OBJECTS “

EAR – COLDNESS & CHILLINESS OF EARS DURING THE FEBRILE HEAT.

NOSE – EPISTAXIS , LOSS OF SMELL, CORYZA WITH STOPPAGE OF NOSE.

FACE – PALE EARTHY & YELLOWISH COLOUR OF FACE, FACE BLOATED, LIVID BLUE CIRCLES AROUND THE EYES, LIPS COVERED WITH SMALL APTHAE & ERUPTIONS, RASH IN THE FACE, PITYRIASIS, REDNESS OF THE SKIN ROUND THE MOUTH.

TEETH – ODONTALGIA AS IF THE TOOTH WERE BEING EXTRACTED,
TOOTHACHE > WHILE EATING
< AFTERNOON & NIGHT



HEAD & FACE

RESPIRATORY SYSTEM

**GASTROINTESTINAL
TRACT**

BONES & LIMBS

RESPIRATORY SYSTEM :

- **COUGH, ESP AT NIGHT, WITH PAINFUL SHOCKS IN THE HEAD & STOMACH, WITH LOATHING, RETCHING & VOMITING.**
- **COUGH CATCHING THE BREATH TO SUFFOCATION, EXCITED BY CONTRACTIVE TICKLING SENSATION EXTENDING FROM UPPER LARYNX TO LOWER BRONCHIAL TUBES.**
- **QUICK ANXIOUS BREATHING**
- **COUGH WITH SPITTING OF BLOOD**
- **SPASMODIC ASTHMA**
- **BREATH SMELLS FETID**

- **PNEUMONIA – IN INFANTILE PNEUMONIA, CHEST LOADED WITH MUCUS, RAPID WHEEZING RESPIRATION, THE PHLEGM DOES NOT YIELD TO COUGH.**
- **ASTHMA – SPASMODIC FORM OF ATTACK, VIOLENT CONTRACTION & CONSTRICTION IN THROAT & CHEST, CAUSING SUFFOCATION, AGGRAVATED BY MOTION.**
- **WHOOPING COUGH – CHILD LOSES BREATH, TURNS PALE & BLUE, STRANGLING WITH GAGGING & VOMITING OF MUCUS, BLEEDING FROM NOSE & MOUTH, ATTACK SETS IN WITH A LONG DRAWN, DIFFICULT, HOWLING & SIGHING INSPIRATION.**



HEAD & FACE

RESPIRATORY SYSTEM

**GASTROINTESTINAL
TRACT**

BONES & LIMBS

GASTRO-INTESTINAL TRACT :

- **MOUTH – PAINFUL SENSIBILITY OF ALL PARTS OF MOUTH, SMARTING OF MOUTH, COPIOUS SALIVATION, CONSTANTLY OBLIGED TO SWALLOW SALIVA, TONGUE CLEAN.**
- **THROAT – SORE THROAT, DIFFICULT DEGLUTITION, SWELLING OF PHARYNX, SPASMODIC CONTRACTIVE SENSATION.**
- **STOMACH – ALL DISEASES WHICH COMMENCE OR ARE ATTENDED WITH CONTINUOUS & PERSISTENT NAUSEA, VOMITING GIVES NO RELIEF, SUCH AS IN GASTRITIS, CHOLERA, DYSENTERY, ABDOMINAL PAIN, ETC. , VOMITING OF WHITE GLAIRY MUCUS OR GREEN JELLY LIKE MUCUS IN LARGE QUANTITIES.**

DIARRHOEA :

- CAUSATION – UNDIGESTIBLE FOOD, RAISINS, CAKES, ANGER & SUPPRESSED ERUPTIONS.
- CHARACTER OF STOOL – GREEN LIKE GRASS, OF WHITE MUCUS, LOOSE EVACUATIONS, AUTUMNAL DIARRHOEA, DIARRHOEA OF CHILDREN INCLINING TO DYSENTERY, HAEMORRHOIDS BLEED PROFUSELY.
- SENSATION – MUCH GRIPING AROUND THE NAVEL, ITCHING OF ANUS
- CONCOMITANTS – ASIATIC CHOLERA WHERE NAUSEA & VOMITING PREDOMINATE, CLEAN TONGUE

COLIC :

- FLATULENT COLIC, GALL-STONE COLIC.**
- LOCATION – COLIC AROUND THE REGION OF NAVEL, CUTTING PAIN ACROSS ABDOMEN, GOES FROM LEFT TO RIGHT.**
- SENSATION – CUTTING PAINS AS FROM A KNIFE, GRIPPING PAIN AS IF INTESTINES WERE TIGHTLY GRASPED WITH HANDS.**
- CONCOMITANTS – NAUSEA, VOMITING, CLEAN TONGUE & NO THIRST.**



HEAD & FACE

RESPIRATORY SYSTEM

**GASTROINTESTINAL
TRACT**

BONES & LIMBS

BONES & LIMBS :

- **BONES OF THE SKULL FEEL BRUISED. PAIN ENTERS FROM TEETH & ROOT OF TONGUE.**
- **PAINS AS IF BONES WERE ALL TORN INTO PIECES.**
- **COLDNESS OF ONE HAND WHILE THE OTHER IS HOT.**
- **CONVULSIVE STARTINGS OF THE LEG & OF THE FEET.**
- **PAIN AS FROM DISLOCATION IN THE HIP JOINT WHEN SITTING.**
- **NOCTURNAL CRAMPS IN THE THIGHS.**
- **VIOLENT ITCHING IN THE CALVES OF THE LEGS.**
- **ULCERS, WITH BLACK BASES ON THE LEGS, & ON THE FOOT.**

FEVER

INTERMITTENT FEVER :

- CAUSATION – MALARIAL FEVER, OVERDRUGGED WITH QUININE & ARSENIC.**
- BEFORE CHILL – YAWNING, STRETCHING & WATERBRASH IN THE MOUTH.**
- CHILL – SHORT CHILL, CHILL MORE IN THE WARM ROOM, FROM EXTERNAL HEAT.**
- DURING CHILL – ICY COLDNESS OF HANDS & FEET, REDNESS OF ONE CHEEK & PALENESS OF OTHER, PROSTRATION & WEAKNESS.**
- HEAT – LONG LASTING WITH NAUSEA & VOMITING.**
- SWEAT – SOUR SWEAT ON THE UPPER PART OF THE BODY.**

HAEMORRHAGE

- **IPECAC IS A GREAT HAEMORRHAGIC REMEDY.**
- **BLEEDING FROM ALL ORIFICES OF THE BODY, FROM UTERUS, BOWELS, KIDNEY, STOMACH, NOSE, LUNGS, ETC.**
- **BLOOD FLOW IS PROFUSE & STEADY.**
- **BRIGHT RED IN COLOUR.**

MODALITIES

AGGRAVATION

- **PERIODICALLY**
- **WINTER**
- **DRY WEATHER**
- **BY LEAST**
MOTION
- **VEAL**
- **MOIST WARM**
WIND
- **LYING DOWN**

AMELIORATION

- **BY REST**
- **PRESSURE**
- **CLOSING**
EYES
- **OPEN AIR**
- **COLD**
DRINKS

**A QUICK COMPARISON
BETWEEN
ANTIM. TART. &
IPECAC**

SIMILARITIES

**FACE BECOMES PALE &
CYANOSED**

**NAUSEA, VOMITING,
COLDNESS &
PROSTRATION**

**GREAT
ACCUMULATION OF
COUGH IN THE
LUNGS,
CANNOT COUGH IT
OUT**

EMETIC

**IT ACTS ON
PNEUMOGASTRIC
NERVE**

**ITS ACTION ON
MUCOUS MEMBRANE
PRODUCES
CATARRHAL
INFLAMMATION**

DIFFERENCES

ANTIM TART

- **IRRESISTABLE DESIRE TO SLEEP**
- **TONGUE IS COATED, THICK WITH REDDENED PAPILLAE**
- **NAUSEA IS RELIEVED BY VOMITING**
- **AGGRAVATION BY DAMP COLD WEATHER & IN SPRING**
- **AMELIORATION BY SITTING OR LYING ON RIGHT SIDE**

IPECAC

- **SLEEPLESSNESS**
- **CLEAN TONGUE WITH PROFUSE SALIVATION**
- **VOMITING GIVES NO RELIEF**
- **AGGRAVATION BY DRY WARM WEATHER & IN WINTER**
- **AMELIORATION BY COMPLETE REST**

The background is a rich, multi-colored nebula or galaxy, featuring a mix of deep purples, blues, and oranges. The colors are most intense in the lower half, where they blend into a bright, glowing band. The upper half is darker, with a dense field of small, bright white stars scattered across the dark blue and purple space. In the center, a white rounded rectangle with a thin white border contains the text "THANK YOU" in a bold, white, sans-serif font. The text is arranged in two lines: "THANK" on the top line and "YOU" on the bottom line, both centered horizontally within the rectangle.

**THANK
YOU**